



# Xtrapuls CD1 AC Servo-drives



## Functions

- Multi-purpose AC servo-drives
- Configurable standard modes of operation
- Resolver and encoder feedback

## Power stage

- AC or DC supply
- IGBT power stage
- Dynamic braking
- Integrated EMC filters
- Nominal current 1.1 A / 230 V ... 35 A / 480 V

## Interfaces

- RS-232
- Various fieldbusses
- Digital and analog I/Os

## Tools

- Setup assistant
- Auto-tuning
- Motor libraries
- Oscilloscope

# XtrapulsCD1, AC Servo-drives

XtrapulsCD1 is a family of configurable multi-purpose AC servo-drives for the solution of very dynamic and accurate regulation tasks. The wide power range and the numerous interfaces make them well suited for the use in various types of machines and installations.

## Electrical data<sup>1</sup>

Type		CD1-n 230					CD1-n 400								
		/ 2.25	/ 4.5	/ 7.5	/ 10.5	/ 16.5	/ 1.8	/ 2.7	/ 5.1	/ 7.2	/ 14	/ 30	/ 45	/ 70	/ 90
Peak current 1s	[Arms]	2.25	4.5	7.5	10.5	16.5	1.8	2.7	5.1	7.2	14	30	45	70	90
Nominal current	[Arms]	1.1	2.25	3.75	5.25	8.25	0.9	1.35	2.55	3.6	7	15	20	35	35
Voltage		1..3 x 230 VAC, 50..60 Hz					3 x 480 VAC, 50..60 Hz								

<sup>1</sup> The EMC filters (up to CD1-n 400/45) and the braking system are integrated (external braking resistor)  
The DC bus can be linked in order to distribute braking energy

## Control loops

- Digital drive for AC synchronous motors
- Current loop 62.5  $\mu$ s
- Speed and position loop 500  $\mu$ s
- Closed-loop position, speed or torque-control
- Cogging torque compensation
- Maximum speed up to 25'000 rpm

## Feedbacks

- 16 bit resolver interface
- Incremental encoder interface
- Hall sensor interface
- Interface for SinCos encoders with absolute commutation track, Endat® or Hiperface®

## Communication interfaces

- RS-232 up to 19.2 kbit/s baud rate
- CANopen up to 1 Mbit/s baud rate
- PROFIBUS DP up to 12 Mbit/s baud rate
- Switches for node address

## I/O interfaces

- Dedicated digital I/Os (Enable, limit-switch, homing, etc.)
- All digital I/Os opto-isolated
- Analog inputs  $\pm 10$  V / 14 bit resolution
- Analog output  $\pm 10$  V / 8 bit resolution
- Relay output "Amp OK"
- Motor brake control output 24 V / 1.5 A
- Encoder simulation from 64 to 16384 ppr

## Standards

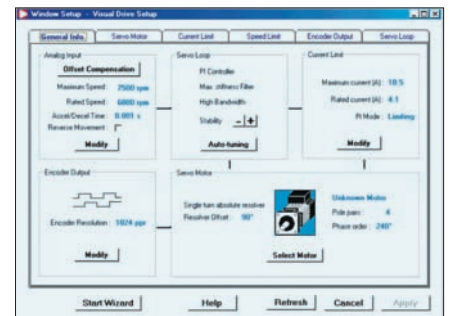
- CE
- UL listed

## Proposed motors

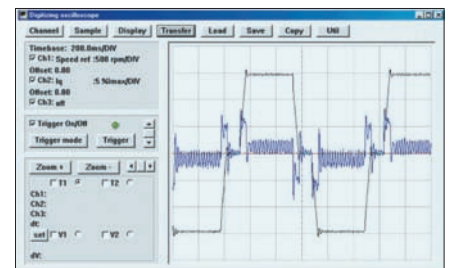
- Brushless motors series Xtrafors
- Compact motors series HDD / ICM
- Hollow shaft motors series HSM
- All AC synchronous motors
- Linear motors
- Torque motors

## Tools

- Setup assistant for motor and drive
- Motor library
- Auto-tuning function for control loops
- Auto-phasing function for motor adjustment
- Test functions such as direct motion commands and digital oscilloscope



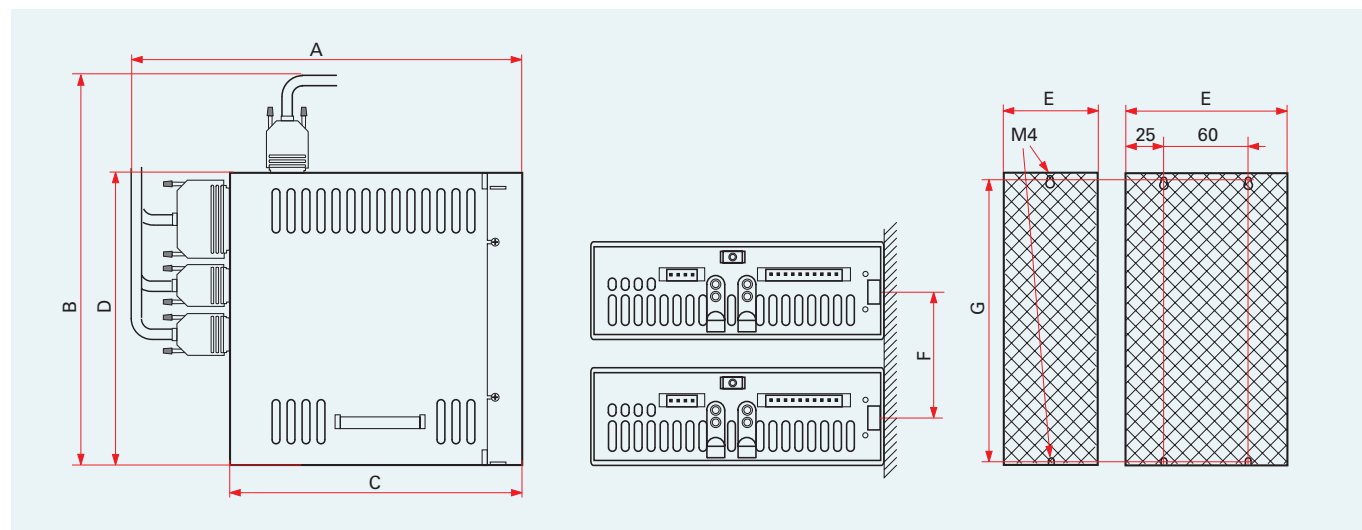
Setup Window



Oscilloscope

The described CD1 versions are optimized for applications in the particular automation environment. The compliance with the various fieldbus standards allows an easy connection of the drive to the hardware and software of the chosen control system.

## Mechanical dimensions



Dimensions [mm]	A	B	C	D	E	F	G
<b>CD1-n 230 / ≤16.5</b>	260	250	199	200	65	80	192
<b>CD1-n 400 / ≤7.2</b>	293	278	230	228	65	80	220
<b>CD1-n 400 / 14</b>	293	308	234	258	83	100	250
<b>CD1-n 400 / ≤90</b>	293	336	234	288	110	127	277

### Speed Servo CD1-a

- Speed or torque controller, slave axis with electronic gearing or positioner with stepper motor emulation
- ±10 V inputs for current or speed command and for external current limitation
- Programmable speed limitation and acceleration ramp
- Motor brake control via 24 V output
- Double feedback system (motor and load) via resolver and encoder
- RS-232 addressing for multi drop applications

### Positioner CD1-pm

- Up to 128 user defined sequences (Home, Position, Speed, Torque, gearing)
- Trapezoidal or S-curve profile generator
- Dedicated I/Os (Home-Index, Start, Stop, Pos, Speed and Sequence)
- User definable I/Os
- Motor brake control via 24 V output
- Slave axis with electronic gearing
- Double feedback system (motor and load) via resolver and encoder
- Choice of stand-alone operation and control via PROFIBUS or RS-232
- PROFIBUS DP with PPO1 .. PPO4 messages, SYNC and FREEZE functions

### CANopen drive CD1-k

- Various operation modes (Homing, Interpolated Position, Position Profile, Velocity Profile, Torque Profile, Gearing)
- Trapezoidal or S-curve profile generator
- Dedicated I/Os (Home-Index, Home-Index, Capture, Low Speed)
- User definable I/Os
- Motor brake control via 24 V output
- Slave axis with electronic gearing
- Double feedback system (motor and load) via resolver and encoder
- Capture function
- Digital cam function
- CANopen interface according to DS-301
- CANopen Drive Profile according to DSP-402

# Addresses

## Switzerland

**Infranor SA**  
Rue des Uttins 27  
CH-1400 Yverdon-les-Bains  
Phone +41 24 447 02 90  
Fax +41 24 447 02 91  
www.infranor.ch  
info.ch@infranor.com

**Infranor AG**  
Glattalstrasse 37  
CH-8052 Zürich  
Phone +41 44 308 50 00  
Fax +41 44 308 50 09  
www.infranor.ch  
info.ch@infranor.com

## Germany

**Infranor GmbH**  
Donaustrasse 19a  
D-63452 Hanau  
Phone +49 6181 18012 0  
Fax +49 6181 18012 90  
www.infranor.de  
info.de@infranor.com

## France

**Infranor SAS**  
1, rue Georges Besse  
F-92160 Antony  
Phone +33 1 56 45 16 00  
Fax +33 1 46 74 69 56  
www.infranor.fr  
info.fr@infranor.com

## Spain

**Infranor Spain SL**  
Occitània, 24  
E-08911 Badalona  
(Barcelona)  
Phone +34 93 460 16 31  
Fax +34 93 399 96 08  
www.infranor.com  
info.es@infranor.com

## Benelux

**Infranor B.V.**  
PO Box 1317  
NL-3260 AH Oud-Beijerland  
Phone +31 186 610 155  
Fax +31 186 614 535  
www.infranor.nl  
info.nl@infranor.com

## England

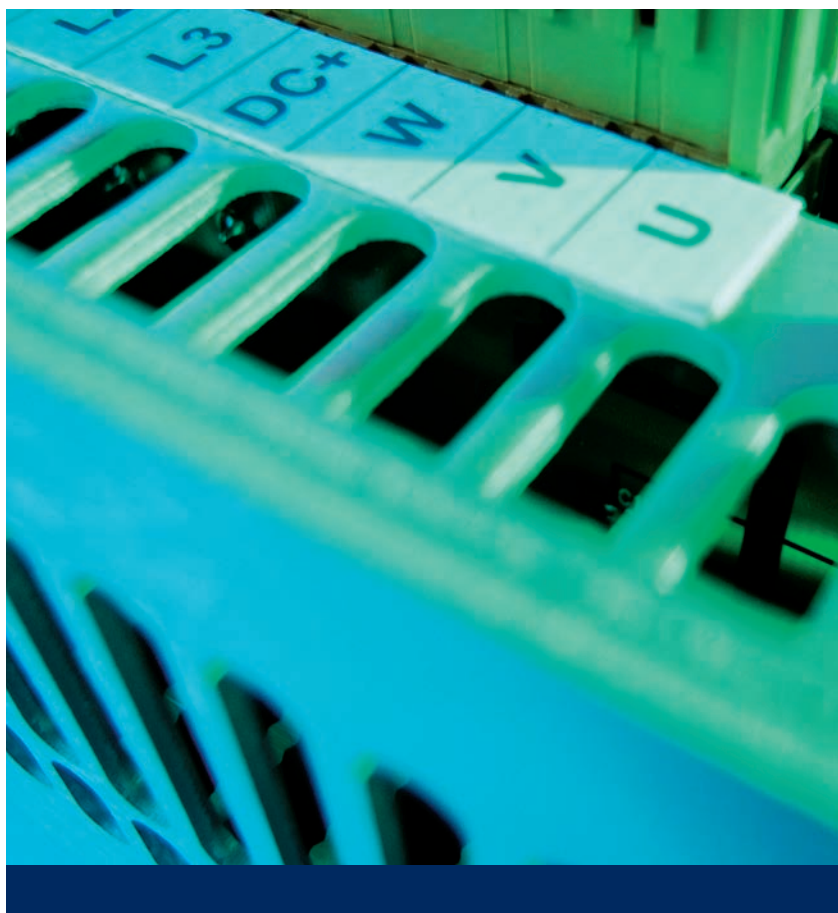
**Infranor Ltd.**  
Studio 4, Building 555  
Bentwaters Business Park  
Rendlesham Suffolk  
IP12 2TW  
UK  
Phone +44 1394 421 536  
Fax +44 1394 421 192  
www.infranor.com  
info.uk@infranor.com

## USA

**Infranor, Inc.**  
299 Ballardvale Street Suite 4  
USA-Wilmington, MA 01887  
Phone +1 978 988 9002  
Fax +1 978 988 9112  
www.infranor.com  
info.usa@infranor.com

## China

**Infranor Motion Control  
Technology (Shanghai) Co., Ltd.**  
Room 601, No.448  
Hongcao Rd  
P. R. China  
CN-200233 Shanghai  
Phone +86 (0)21 6145 5455  
Fax +86 (0)21 6145 5457  
www.infranor.cn  
info.cn@infranor.com



## The Infranor Group

Infranor creates added value for its customers by providing tailor-made motion solutions.

Based on strong working relationships, Infranor offers extensive market know-how, comprehensive engineering skills and a wide range of high-quality products leading to productivity gains and therefore to comparative advantages for its customers in their respective markets.

## The Infranor Brand

The Infranor Brand is a synonym for:

- Excellence
- Cooperation
- Added value